

Technical specifications⁽¹⁾

General EUWL		40	60	80
Dimensions HxWxD	(mm)	1014x898x2672		
Weight				
• machine weight	(kg)	884	1100	1332
• operation weight	(kg)	897	1120	1359
Connections				
• chilled water inlet and outlet	(inch)	flexible joint 3"		
• condenser refrigerant piping inlet and outlet	(inch)	2 1/8"	2 1/8"	2 5/8"
		7/8"	1 1/8"	1 3/8"
• high pressure relief valve	(inch)	1x 1"	1x 1"	2x 1"
Compressor				
Type		semi-hermetic single screw		
Qtyxmodel		1x ZHA5LMGYE	1x ZHA7MSGYE	1x ZHA7WSGYE
Speed	(rpm)	2880		
Oil type		FVC68D		
Oil charge volume	(l)	7,5 ^{+0,5} ₋₀	10 ^{+0,5} ₋₀	10 ^{+0,5} ₋₀
Condensor				
refer to engineering specifications as published by the supplier of your remote condenser				
Evaporator				
Type		brased plate heatexchanger		
Qtyxmodel		1x AC120EQ-NP156	1x AC250EQ-NP96	1x AC250EQ-NP128
Water flow range	(l/min)	175-700	265-1070	350-1400

General EUWL		100	120	140
Dimensions HxWxD	(mm)	1014x898x2672	2000x898x2672	2000x898x2672
Weight				
• machine weight	(kg)	1418	2200	2432
• operation weight	(kg)	1462	2240	2479
Connections				
• chilled water inlet and outlet	(inch)	flexible joint 3" 2x 3" 2x 3"		
• condenser refrigerant piping inlet and outlet	(inch)	2 5/8"	2x 2 1/8"	2 5/8"+2 1/8"
		1 3/8"	2x 1 1/8"	1 3/8"+1 1/8"
• high pressure relief valve	(inch)	2x 1"	2x 1"	3x 1"
Compressor				
Type		semi-hermetic single screw		
Qtyxmodel		1x ZHA9LSGYE	2x ZHA7MSGYE	1x ZHA7MSGYE 1x ZHA7WSGYE
Speed	(rpm)	2880		
Oil type		FVC68D		
Oil charge volume	(l)	14 ^{+0,5} ₋₀	2x 10 ^{+0,5} ₋₀	2x 10 ^{+0,5} ₋₀
Condensor				
refer to engineering specifications as published by the supplier of your remote condenser				
Evaporator				
Type		brased plate heatexchanger		
Qty x model		1x AC250EQ-NP162	2x AC250EQ-NP96	1x AC250EQ-NP96 1x AC250EQ-NP128
Water flow range	(l/min)	400-1600	525-2100	625-2500

General EUWL		160	180	200
Dimensions HxWxD* (mm)		2000x898x2672		
Weight				
• machine weight (kg)		2664	2750	2836
• operation weight (kg)		2718	2811	2904
Connections				
• chilled water inlet and outlet (inch)		flexible joint 2x 3"		
• condenser refrigerant piping inlet and outlet (inch)	2 5/8"+2 1/8"	2x 2 5/8"	2x 2 5/8"	2x 5/8"
	1 3/8"+1 1/8"	2x 1 3/8"	2x 1 3/8"	2x 1 3/8"
• high pressure relief valve (inch)		4x 1"		
Compressor				
Type	semi-hermetic single screw			
Qty x model	2x ZHA7WSGYE	1x ZHA7WSGYE 1x ZHA9LSGYE	2x ZHA9LSGYE	2x ZHA9LSGYE
Speed (rpm)	2880			
Oil type	FVC68D			
Oil charge volume (l)	2x 10 ^{+0.5} ₋₀	10 ^{+0.5} ₋₀ +14 ^{+0.5} ₋₀	2x 14 ^{+0.5} ₋₀	
Condenser				
refer to engineering specifications as published by the supplier of your remote condenser				
Evaporator				
Type	brased plate heatexchanger			
Qty x model	2x AC250EQ-NP128	1x AC250EQ-NP128 1x AC250EQ-NP162	2x AC250EQ-NP162	
Water flow range (l/min)	700-2800	750-3000	800-3200	

Electrical specifications ⁽¹⁾

Model EUWL	40	60	80	100	120	140	160	180	200	
Power supply										
• Phase					3~					
• Frequency (Hz)					50					
• Voltage (V)					400					
• Voltage tolerance (%)					±10					
Unit										
• Nominal running current (A)	48	78	108	118	78+78	78+108	108+108	108+118	118+118	
• Maximum running current (A)	76	120	174	184	240	294	348	358	368	
• Recommended fuses according to IEC 269-2 (gL)	3x 100	3x 160	3x 200	3x 200	2x 3x 200	3x 200 +3x 250	2x 3x 250	2x 3x 250	2x 3x 250	
Compressor										
• Phase					3~					
• Frequency (Hz)					50					
• Voltage (V)					400					
• Nominal running current (A)	48	78	108	118	78+78	78+108	108+108	108+118	118+118	
Control										
• Phase					1~					
• Frequency (Hz)					50					
• Voltage (V)					230					

(1) Refer to the engineering data book for the complete list of specifications.

DESCRIPTION

The EUWL(*)-MX water-cooled water chillers are available in 9 standard sizes.

EUWL(*)40~200

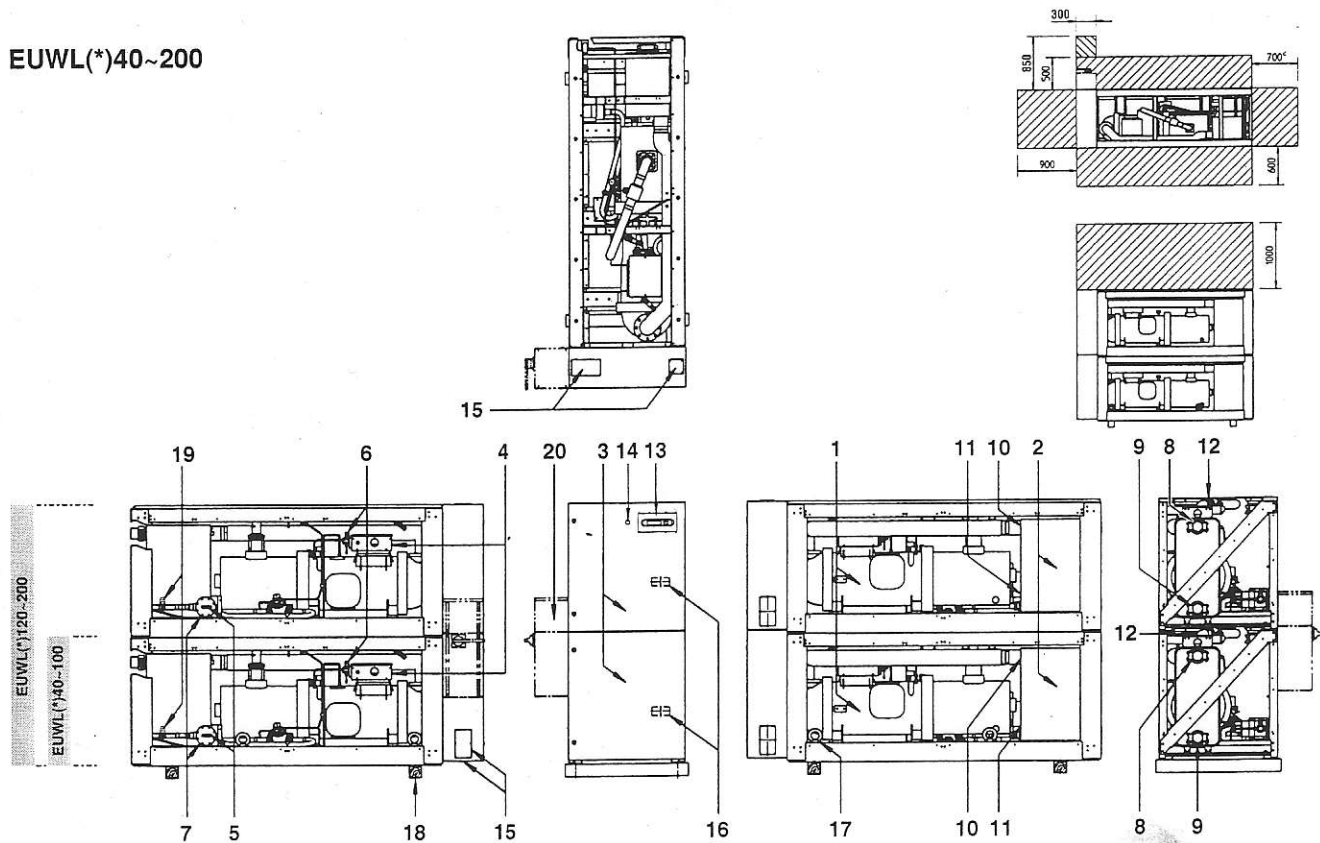



Figure - Main components

- | | | | |
|----|-----------------------------------|----|----------------------------------|
| 1 | Compressor | 11 | Leaving water temperature sensor |
| 2 | Evaporator | 12 | Discharge stopvalve |
| 3 | Switchbox | 13 | Digital display controller |
| 4 | Compressor switchbox | 14 | Emergency stop |
| 5 | Charge valve | 15 | Power supply intake |
| 6 | High pressure switch | 16 | Field wiring intake |
| 7 | Drier | 17 | Eyebolts for lifting |
| 8 | Chilled water in | 18 | Transportbeam |
| 9 | Chilled water out | 19 | Ballvalve liquid pipe |
| 10 | Entering water temperature sensor | 20 | Main isolator switch (optional) |
-  Required space around the unit for service